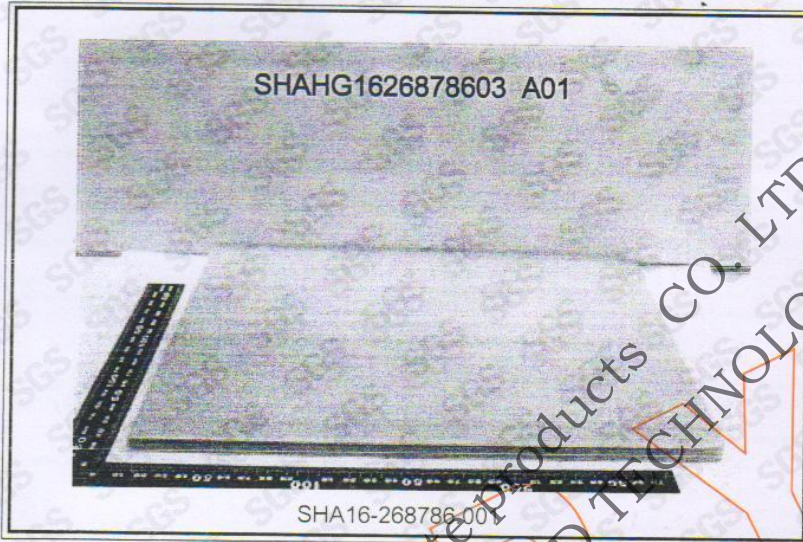




测试报告

No. SHAHG1626878603 A01 日期: 2016年12月15日 第3页,共3页

样品照片:



此照片仅限于随SGS正本报告使用

报告完

Attention: To check the authenticity of testing / inspection report & certificate, please contact us at telephone: (86-755-8307-1443, or email: CN.Doccheck@sgs.com

NINGBO FET Diatomite Products CO., LTD  
NINGBO FET BUILDING MATERIALS AND TECHNOLOGY CO., LTD



Unless otherwise agreed in writing, this document is issued by the Company subject to its General Conditions of Service printed overleaf, available on request or accessible at <http://www.sgs.com/en/Terms-and-Conditions.aspx> and, for electronic format documents, subject to Terms and Conditions for Electronic Documents at <http://www.sgs.com/en/Terms-and-Conditions/Terms-e-Documents.aspx>. Attention is drawn to the limitation of liability, indemnification and jurisdiction issues defined therein. Any holder of this document is advised that information contained hereon reflects the Company's findings at the time of its intervention only and within the limits of Client's instructions, if any. The Company's sole responsibility is to its Client and this document does not exonerate parties to a transaction from exercising all their rights and obligations under the transaction documents. This document cannot be reproduced except in full, without prior written approval of the Company. Any unauthorized alteration, forgery or falsification of the content or appearance of this document is unlawful and offenders may be prosecuted to the fullest extent of the law. Unless otherwise stated the results shown in this test report refer only to the sample(s) tested.

SHCM 5908204

SGS-CSI Technical Services (Shanghai) Co. Ltd. 13<sup>th</sup> Building, No.889 Yishan Road Xuhui District, Shanghai China 200233 t E&E (86-21) 61402553 f E&E (86-21) 64953679 www.sgs.com.cn  
Testing Center for Building Services 中国·上海·徐汇区宜山路889号3号楼 邮编: 200233 t HL (86-21) 61402594 f HL (86-21) 61156899 e sgs.china@sgs.com

Member of the SGS Group (SGS SA)





测试报告

No. SHAHG1626878603 A01

日期: 2016年12月15日 第2页,共3页

测试结果:

测试样品描述:

样品编号	SGS样品ID	描述
SN1	SHA16-268786.001	灰色硅藻土板

备注:

- (1) 1 mg/kg = 0.0001%
- (2) MDL = 方法检测限
- (3) ND = 未检出 (< MDL)
- (4) "-" = 未规定

石棉

测试方法: 参照NIOSH 9002:1994, 用偏光显微镜定性测定石棉。

测试项目	CAS NO.	单位	MDL	001
阳起石	77536-66-4	%	0.1	阴性
铁石棉	12172-73-5	%	0.1	阴性
直闪石	77536-67-5	%	0.1	阴性
温石棉	12001-29-5	%	0.1	阴性
青石棉	132207-32-0	%	0.1	阴性
	12001-28-4	%	0.1	阴性
透闪石	77536-68-6	%	0.1	阴性

备注:

- (1) 阴性=未检出石棉, 阳性=检出石棉

Attention: To check the authenticity of testing/inspection report, please contact us at telephones: (86-755) 83071443, or email: CH.Dorecheck@sgs.com

NINGBO FET BUILDING MATERIALS AND TECHNOLOGY CO., LTD



Unless otherwise agreed in writing, this document is issued by the Company subject to its General Conditions of Service printed overleaf, available on request or accessible at <http://www.sgs.com/en/Terms-and-Conditions.aspx> and, for electronic format documents, subject to Terms and Conditions for Electronic Documents at <http://www.sgs.com/en/Terms-and-Conditions/Terms-e-Documents.aspx>. Attention is drawn to the limitation of liability, indemnification and jurisdiction issues defined therein. Any holder of this document is advised that information contained hereon reflects the Company's findings at the time of its intervention only and within the limits of Client's instructions, if any. The Company's sole responsibility is to its Client and this document does not exonerate parties to a transaction from exercising all their rights and obligations under the transaction documents. This document cannot be reproduced except in full, without prior written approval of the Company. Any unauthorized alteration, forgery or falsification of the content or appearance of this document is unlawful and offenders may be prosecuted to the fullest extent of the law. Unless otherwise stated the results shown in this test report refer only to the sample(s) tested.

SHCM 5908205

SGS (China) Technical Services (Shanghai) Co., Ltd. 3rd Building, No.889 Yishan Road Xuhui District, Shanghai China 200233 t E&E (86-21) 61402553 f E&E (86-21) 64953679 www.sgs.com.cn  
 Testing Center of SGS (China) Technical Services (Shanghai) Co., Ltd. 中国·上海·徐汇区宜山路889号3号楼 邮编: 200233 t HL (86-21) 61402594 f HL (86-21) 61156899 e sgs.china@sgs.com

Member of the SGS Group (SGS SA)





测试报告

No. SHAHG1626878603 A01

日期: 2016年12月15日 第1页,共3页

宁波丰尔泰建材科技有限公司  
浙江省慈溪市龙山工业区龙镇大道189号

此报告替代原来编号为SHAHG1626878602 日期为2016/12/13的报告.

以下测试之样品是由申请者所提供及确认: 硅藻土制品

SGS工作编号: NBHL1612017605SD - NB  
样品接收日期: 2016年12月07日  
测试周期: 2016年12月07日 - 2016年12月13日  
测试要求: 根据客户要求测试  
测试方法: 请参见下一页  
测试结果: 请参见下一页  
测试结果概要:

测试要求	结论
石棉	见测试结果

通标标准技术服务(上海)有限公司  
授权签名

Serena Wang 王璟  
批准签署人



Unless otherwise agreed in writing, this document is issued by the Company subject to its General Conditions of Service printed overleaf, available on request or accessible at <http://www.sgs.com/en/Terms-and-Conditions.aspx> and, for electronic format documents, subject to Terms and Conditions for Electronic Documents at <http://www.sgs.com/en/Terms-and-Conditions/Terms-e-Document.aspx>. Attention is drawn to the limitation of liability, indemnification and jurisdiction issues defined therein. Any holder of this document is advised that information contained hereon reflects the Company's findings at the time of its intervention only and within the limits of Client's instructions, if any. The Company's sole responsibility is to its Client and this document does not exonerate parties to a transaction from exercising all their rights and obligations under the transaction documents. This document cannot be reproduced except in full, without prior written approval of the Company. Any unauthorized alteration, forgery or falsification of the content or appearance of this document is unlawful and offenders may be prosecuted to the fullest extent of the law. Unless otherwise stated the results shown in this test report refer only to the sample(s) tested.

SHCM 5908206

SGS-通标标准技术服务(上海)有限公司  
Testing Center of Shanghai Branch

3<sup>rd</sup> Building, No.889 Yishan Road Xuhui District, Shanghai China 200233  
中国·上海·徐汇区宜山路889号3号楼 邮编: 200233

t E&E (86-21) 61402553 f E&E (86-21) 64953679 www.sgs.com.cn  
t HL (86-21) 61402594 f HL (86-21) 61156899 e sgs.china@sgs.com

Member of the SGS Group (SGS SA)

Attention: To check the authenticity of testing inspection report & certificate, please contact us at telephone: (86-755) 81011443, or email: CN.Doccheck@sgs.com